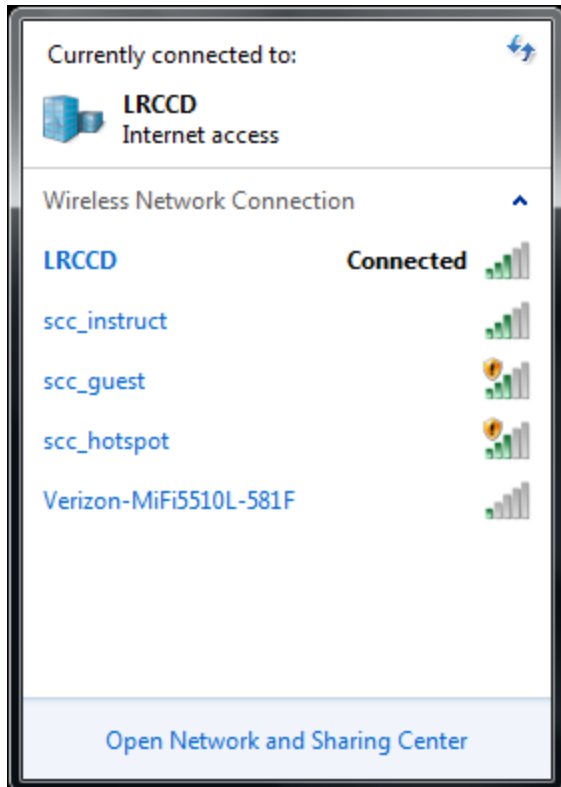


## LRCCD DNS Issue

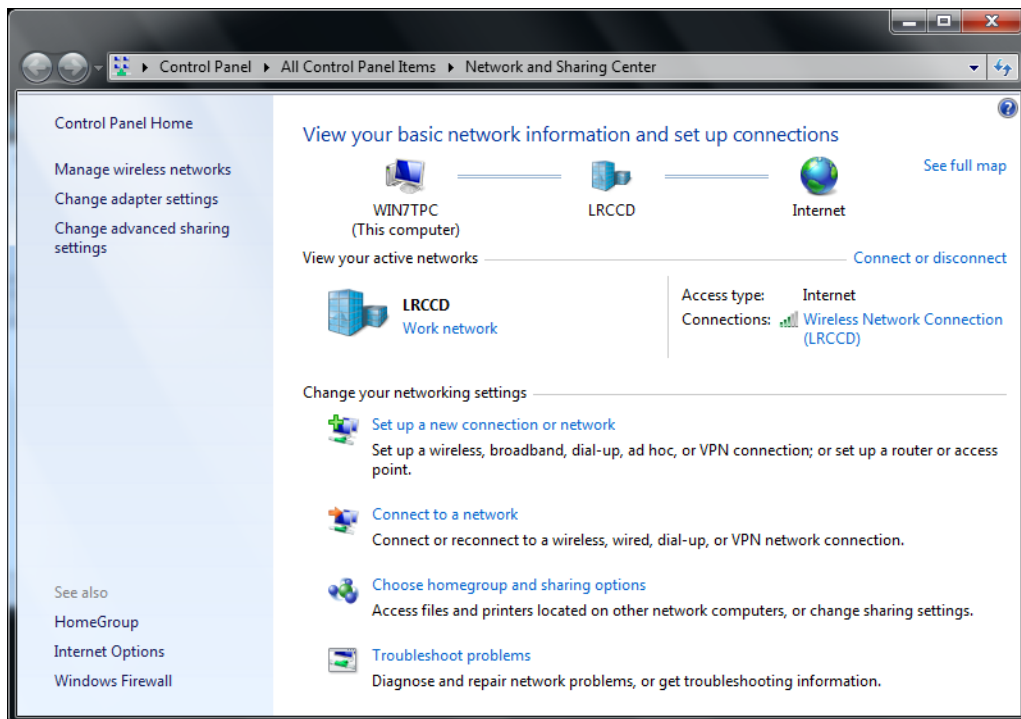
You may be able to logon the LRCCD network, get an IP address but still cannot access the internet. The likely cause of the issue is an entry in the DNS settings.

To correct this issue, please click on the wireless icon (bottom right, next to clock).

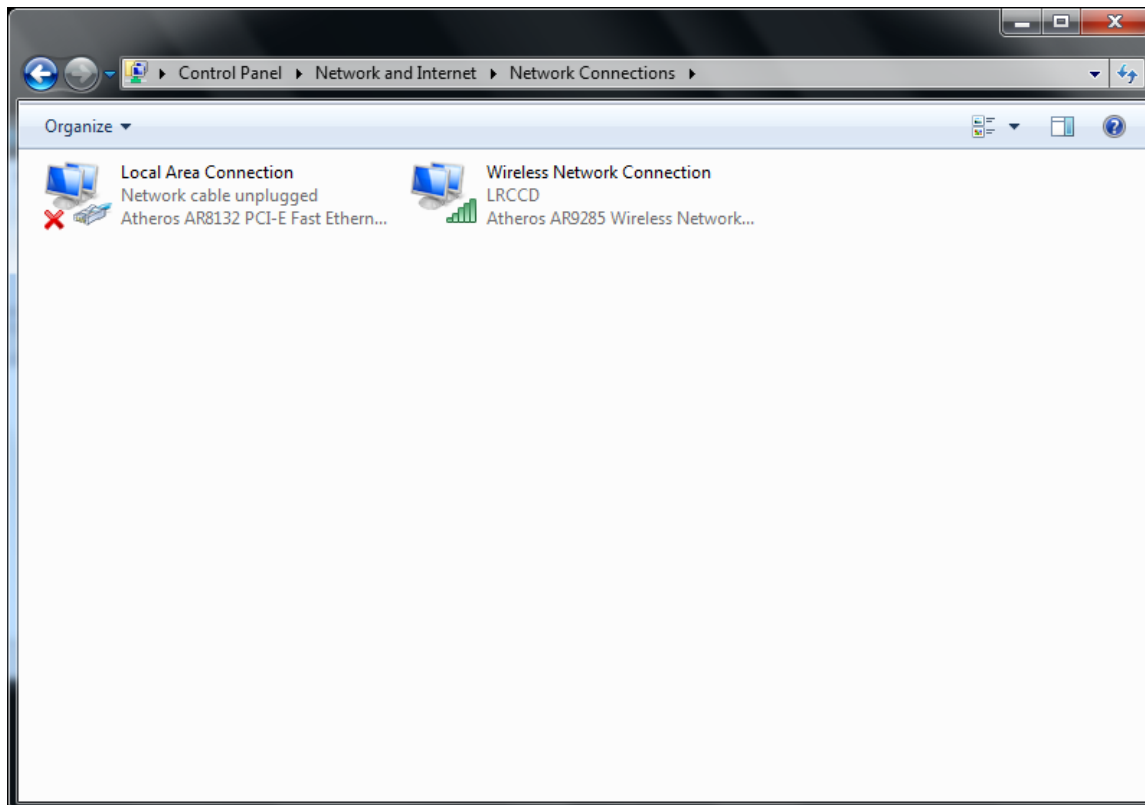
Next click on Open Network and Sharing Center



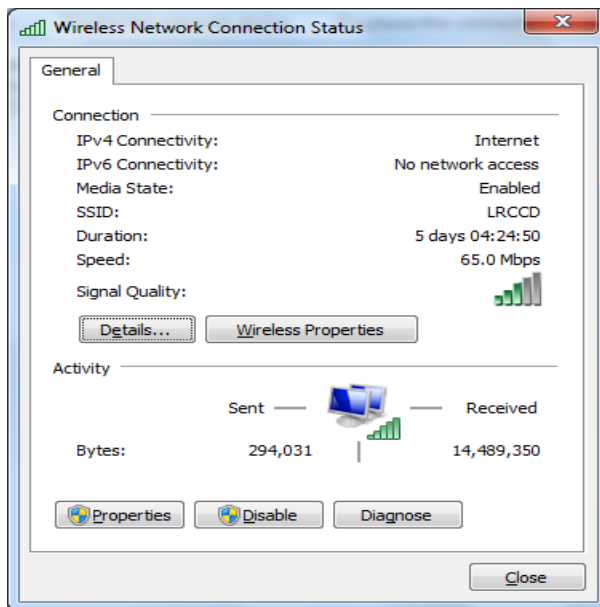
Next click on change adapter settings



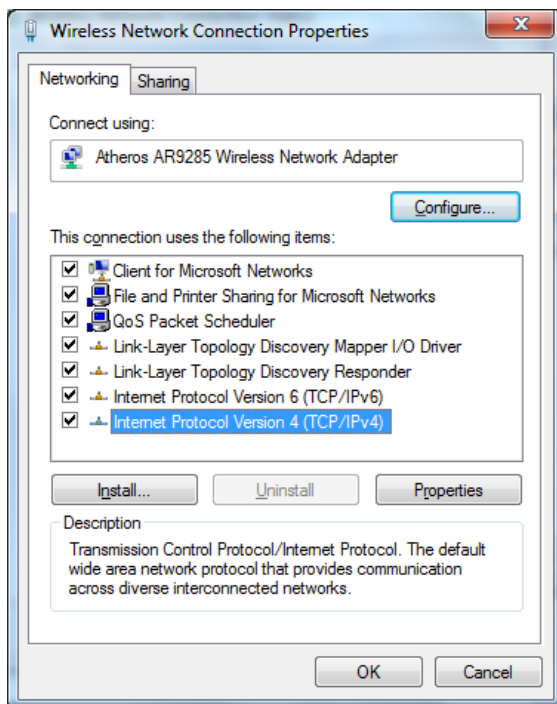
Click on the wireless network connection



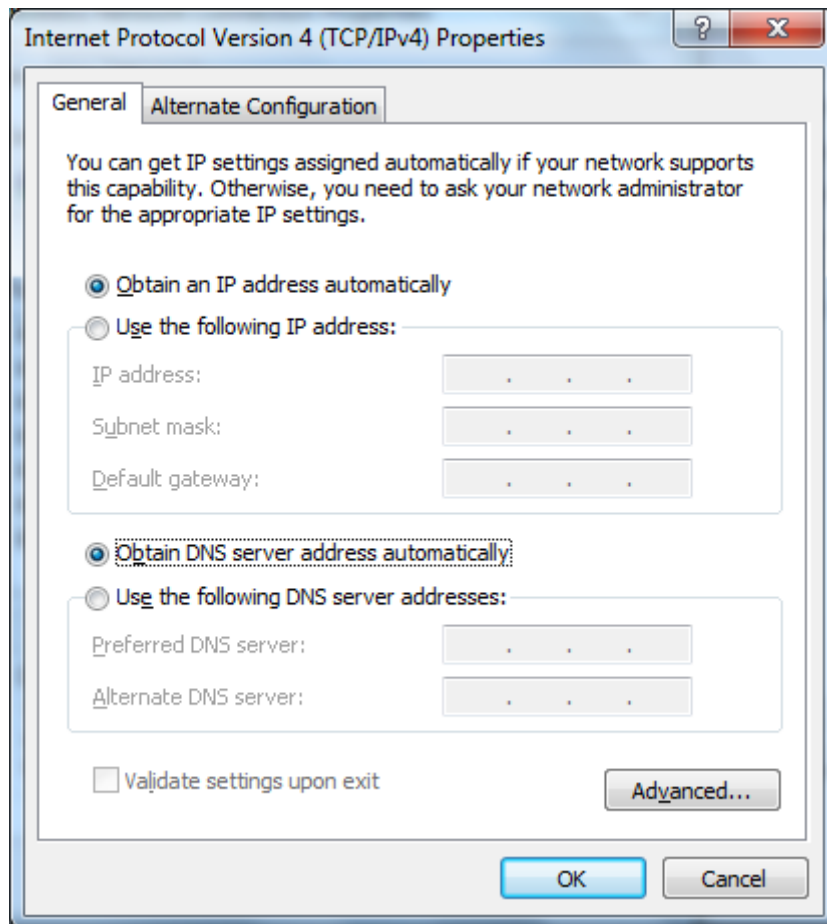
Click on Properties



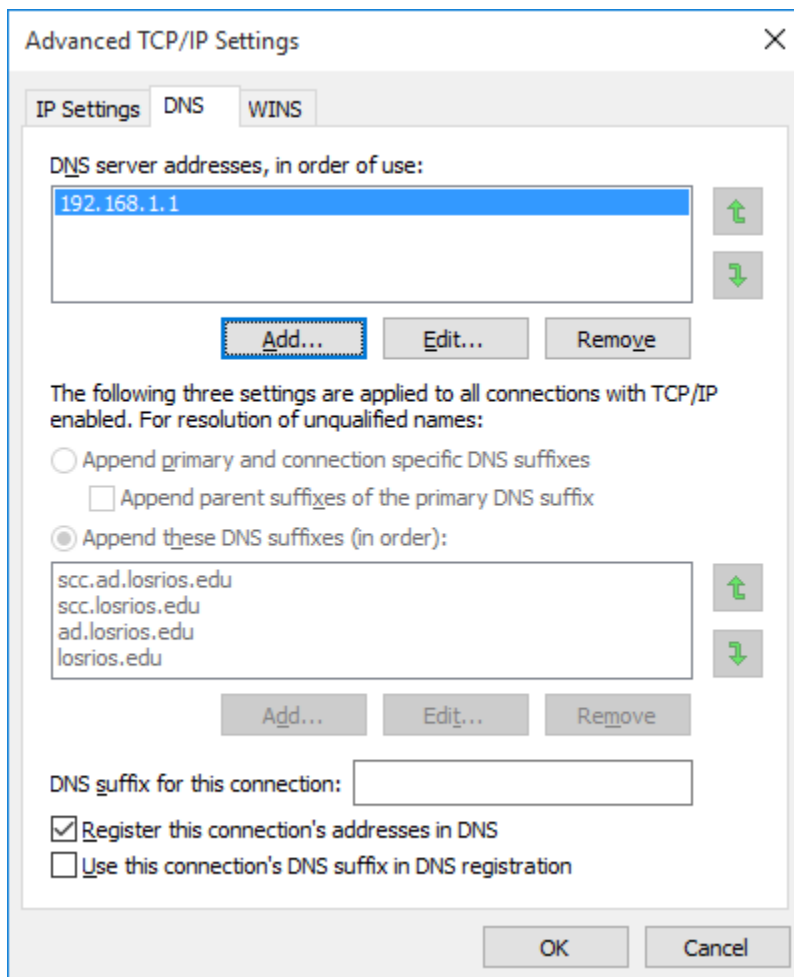
Highlight Internet Protocol Version 4 and click on Properties



If there is an entry in “use the following DNS server addresses”, please clear it and make sure it obtain DNS server address automatically. Click OK and you should be able to connect to the internet.



Also check the Advanced section. There may be an entry here as well. If there is please remove it.



The image shows the 'Advanced TCP/IP Settings' dialog box with the 'DNS' tab selected. The 'IP Settings' tab is also visible. The 'DNS' tab contains the following elements:

- DNS server addresses, in order of use:** A list box containing '192.168.1.1'. To the right of the list box are two green arrow buttons for moving items up and down.
- Add... Edit... Remove** buttons below the list box.
- The following three settings are applied to all connections with TCP/IP enabled. For resolution of unqualified names:**
  - ☐ Append primary and connection specific DNS suffixes
    - ☐ Append parent suffixes of the primary DNS suffix
  - ☒ Append these DNS suffixes (in order):
- A list box containing the following DNS suffixes: 'scc.ad.losrios.edu', 'scc.losrios.edu', 'ad.losrios.edu', and 'losrios.edu'. To the right of the list box are two green arrow buttons for moving items up and down.
- Add... Edit... Remove** buttons below the list box.
- DNS suffix for this connection:** An empty text box.
- ☒ Register this connection's addresses in DNS
- ☐ Use this connection's DNS suffix in DNS registration

At the bottom of the dialog box are **OK** and **Cancel** buttons.